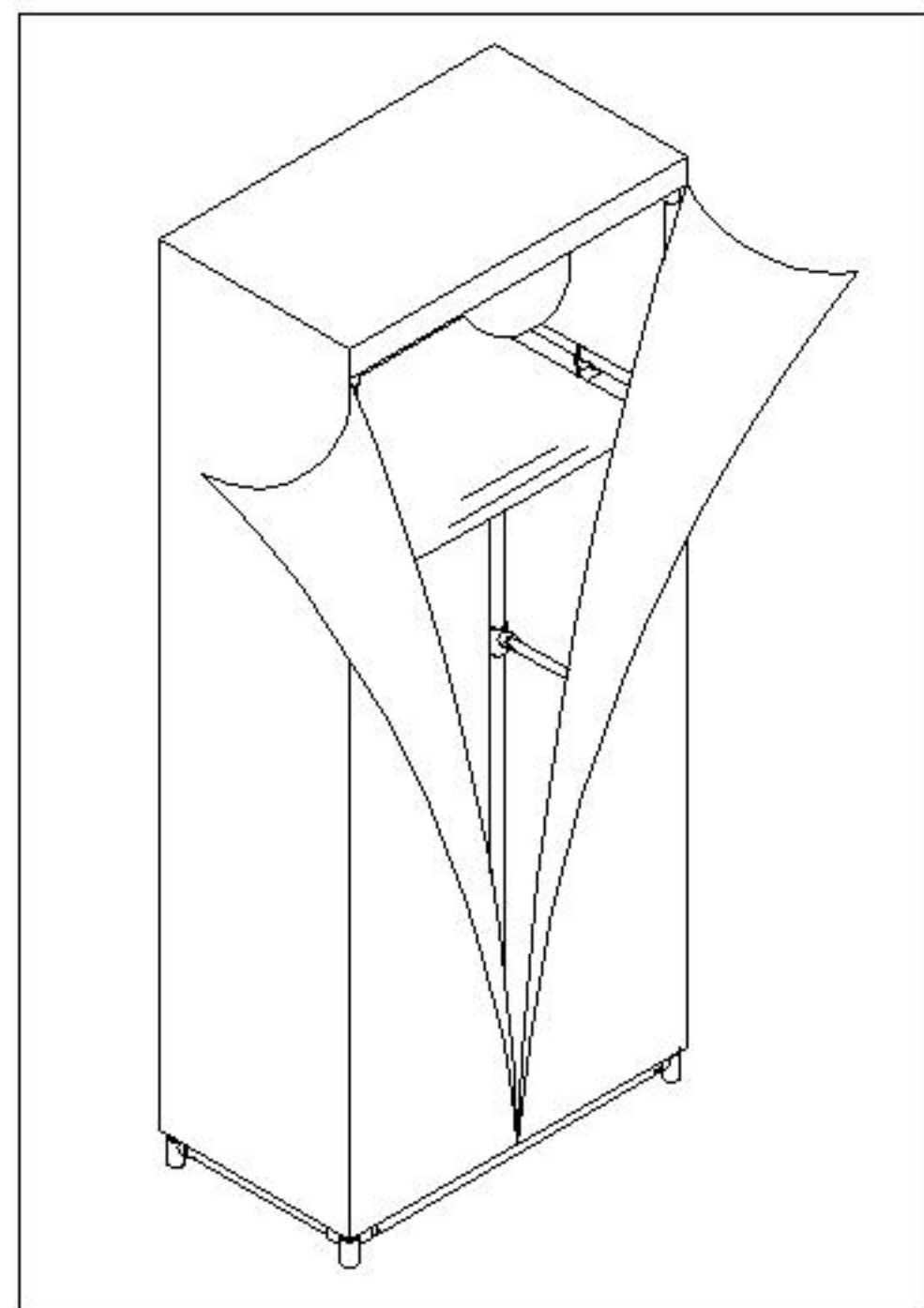


Garment Wardrobe

Item# HM248/ HM249.01/ HM249.04

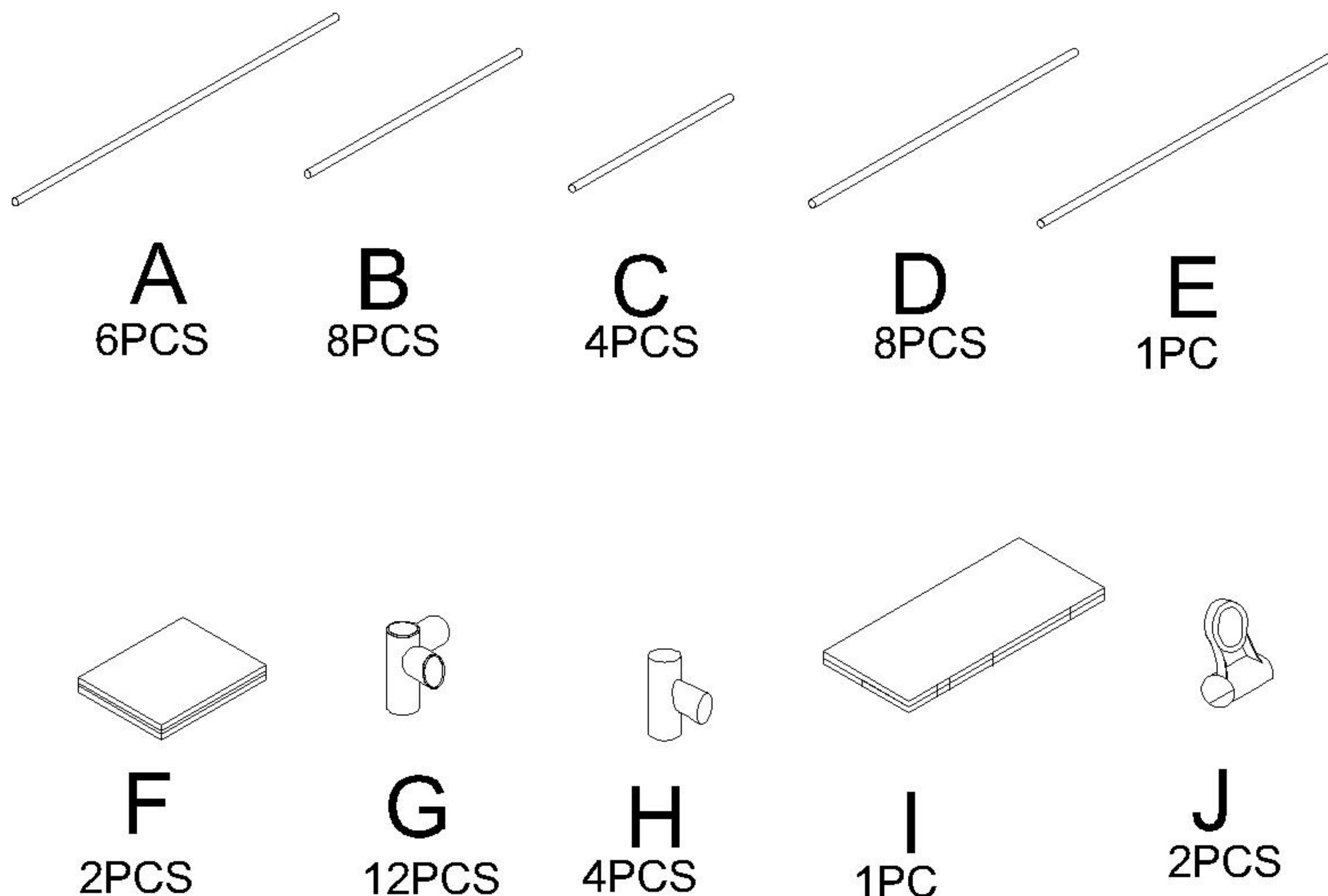
Assembly Instruction



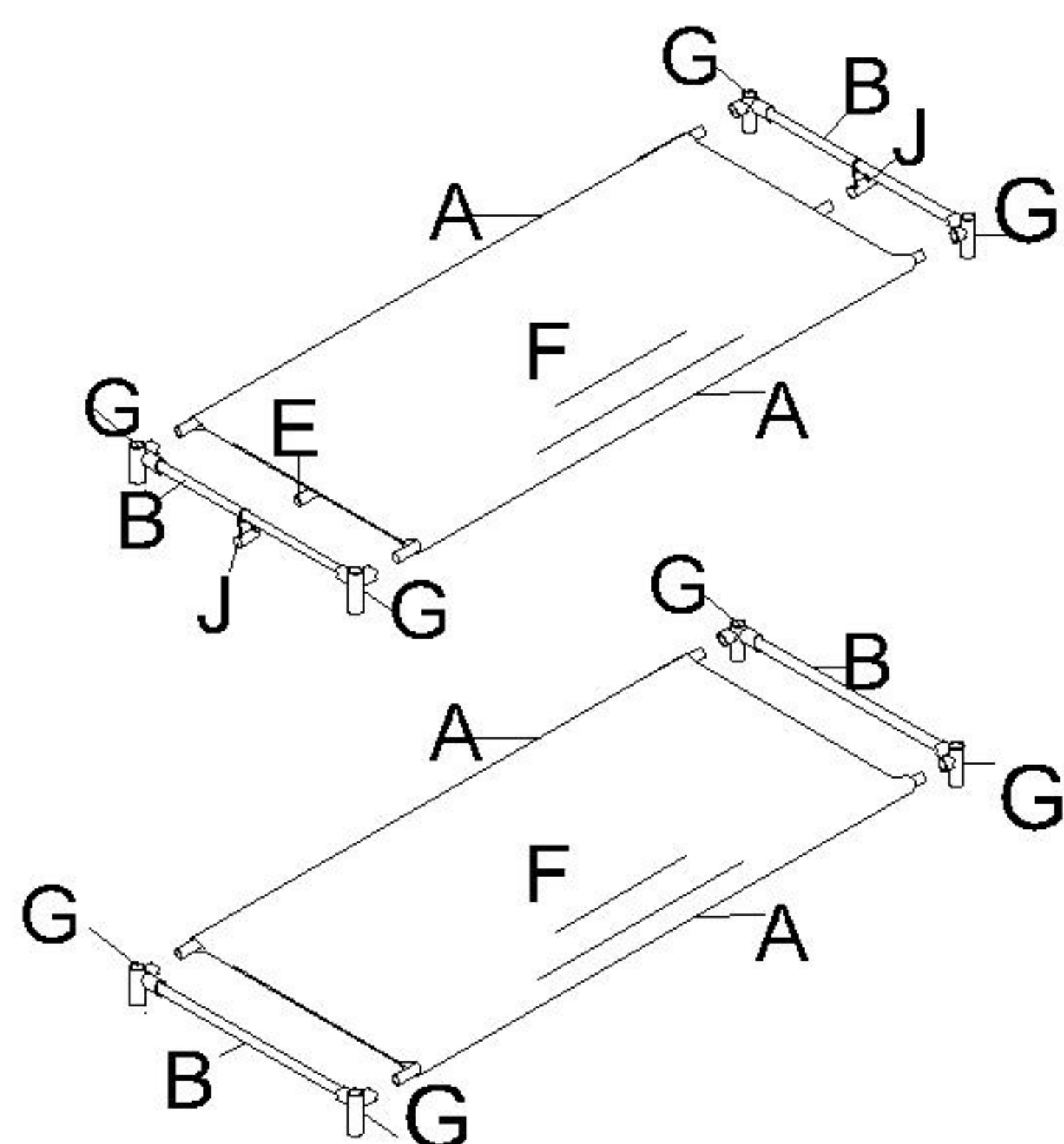
Notes:

- 1.Be careful of sharp edges on the tubes ;
- 2.Please check the parts quantity;
- 3.Please assemble according to assembly instructions ;
- 4.Please only clean the cover with a dry cloth ;
- 5.Please keep away from direct sunlight and only place in a dry environment .

Parts Identification

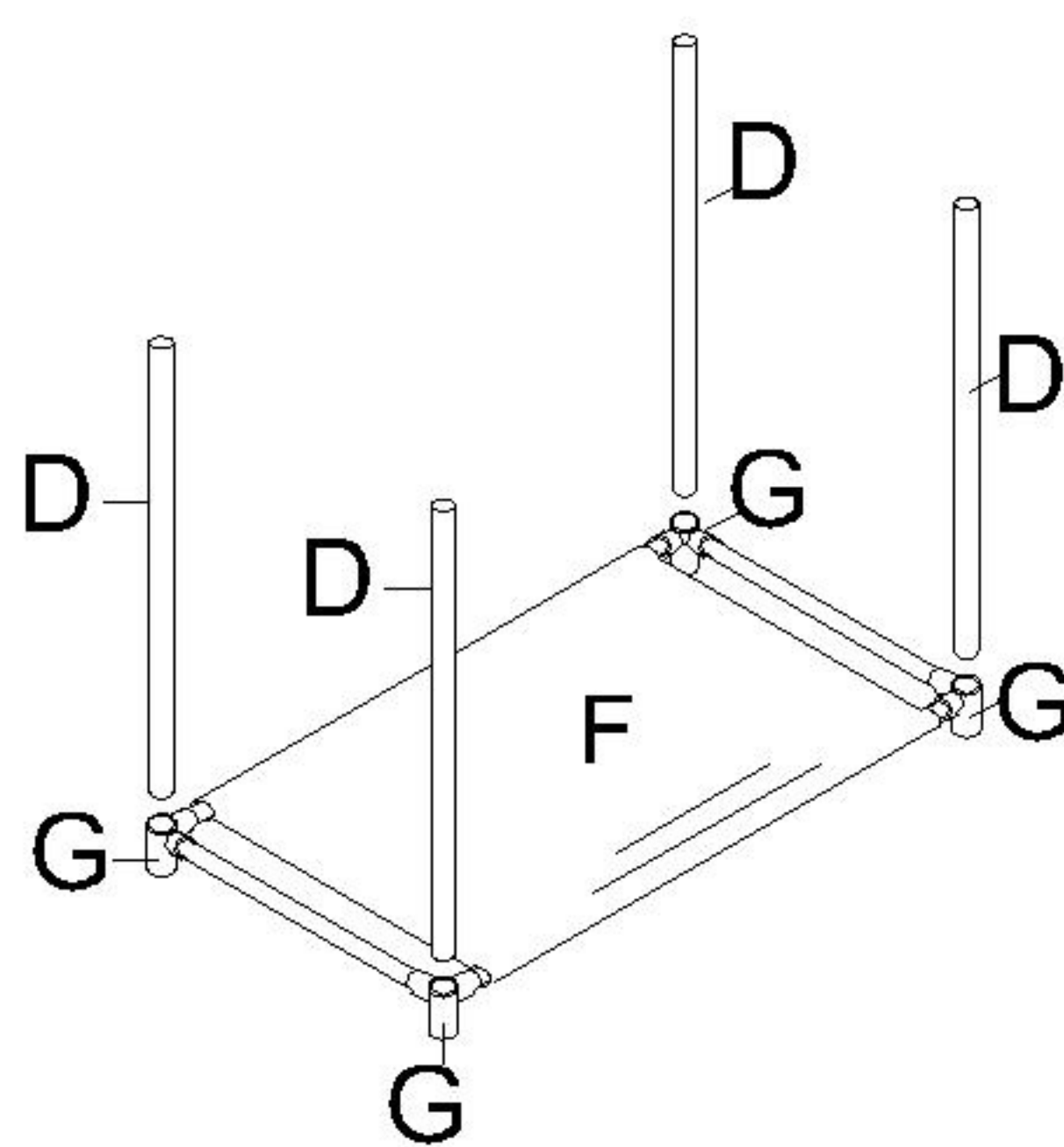


Step 1



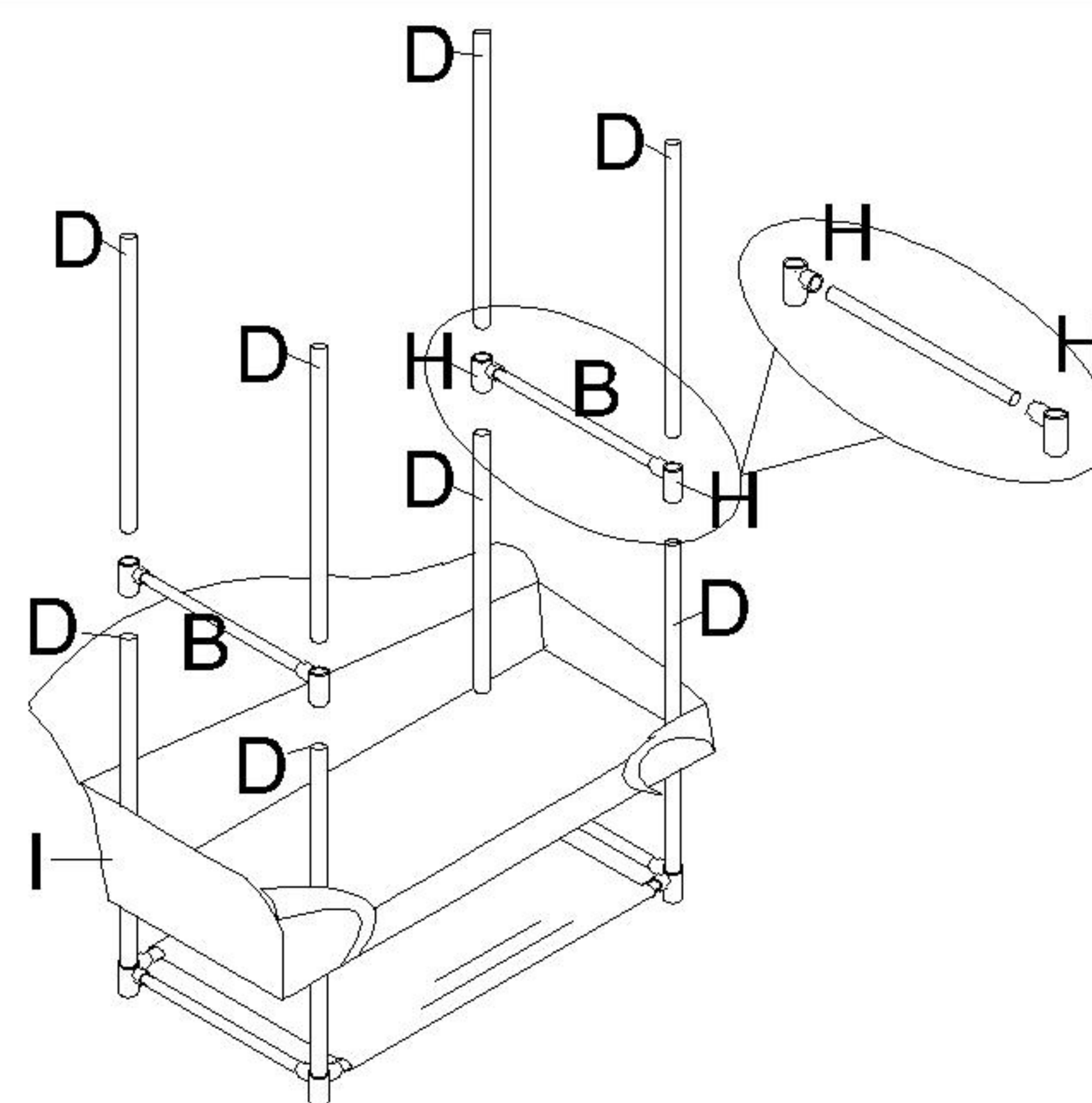
First, attach fabric (F) into tube (A), then assemble metal tubes (A&B) with plastic part (G).
Repeat one time but WITHOUT fabric.
Second, assemble metal tubes (A,B&E) with plastic part (G&J).

Step 2



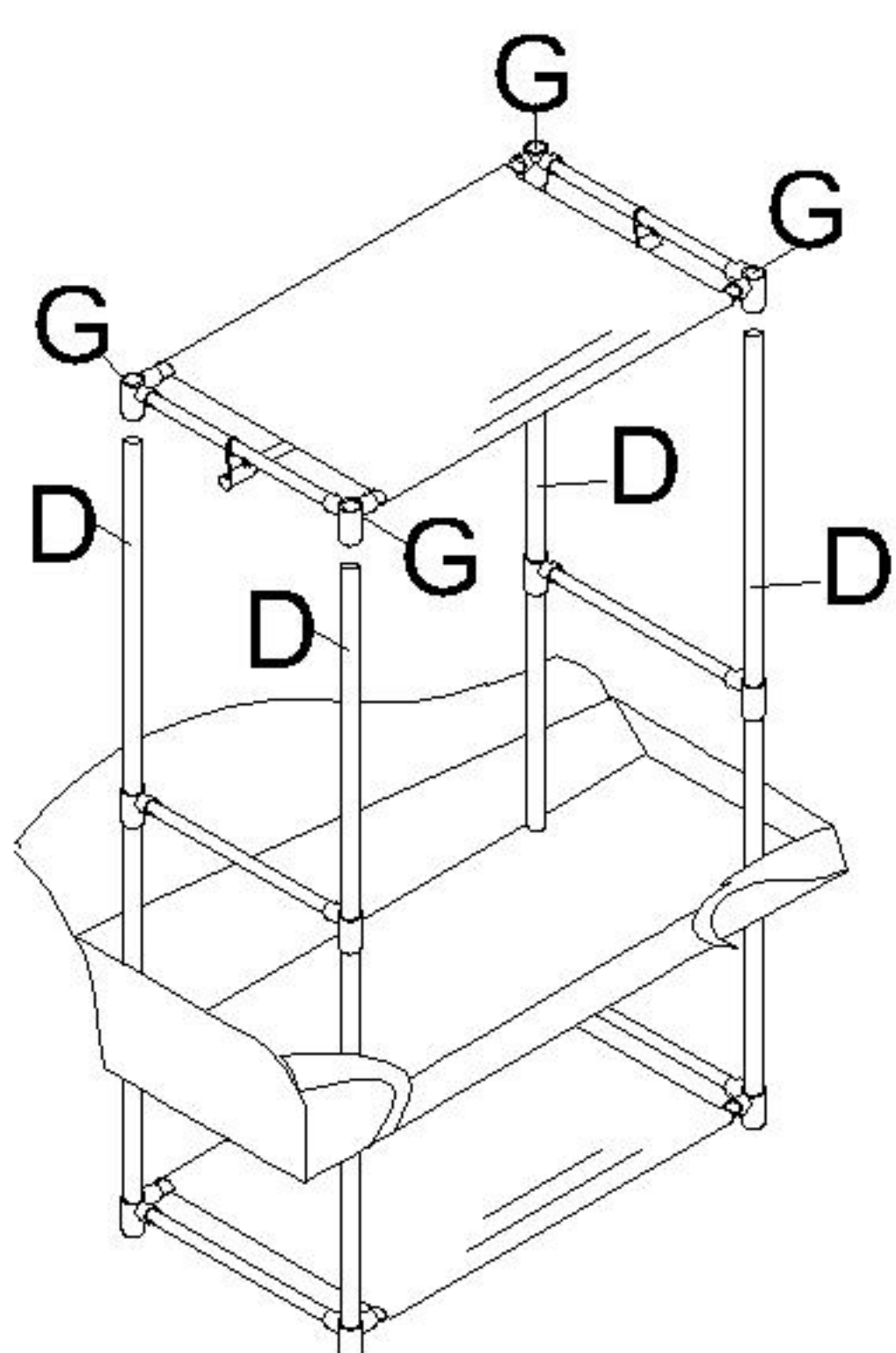
Insert tube (D) into plastic part (G).

Step 3



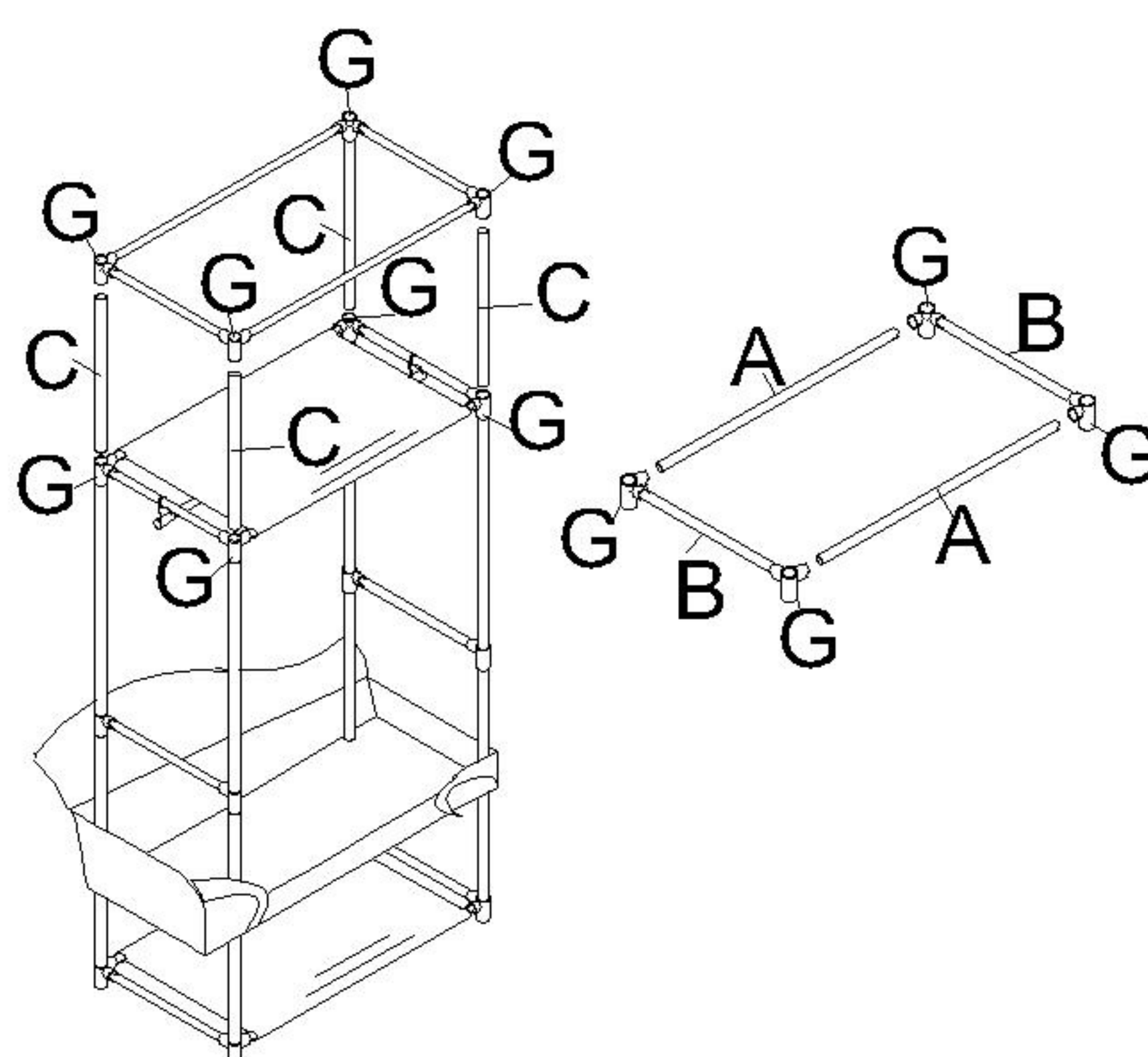
Put fabric cover (I) to bottom shelf, then assemble metal tube (B&D) with plastic part (H).
Then insert tube (D) into plastic part (H).

Step 4



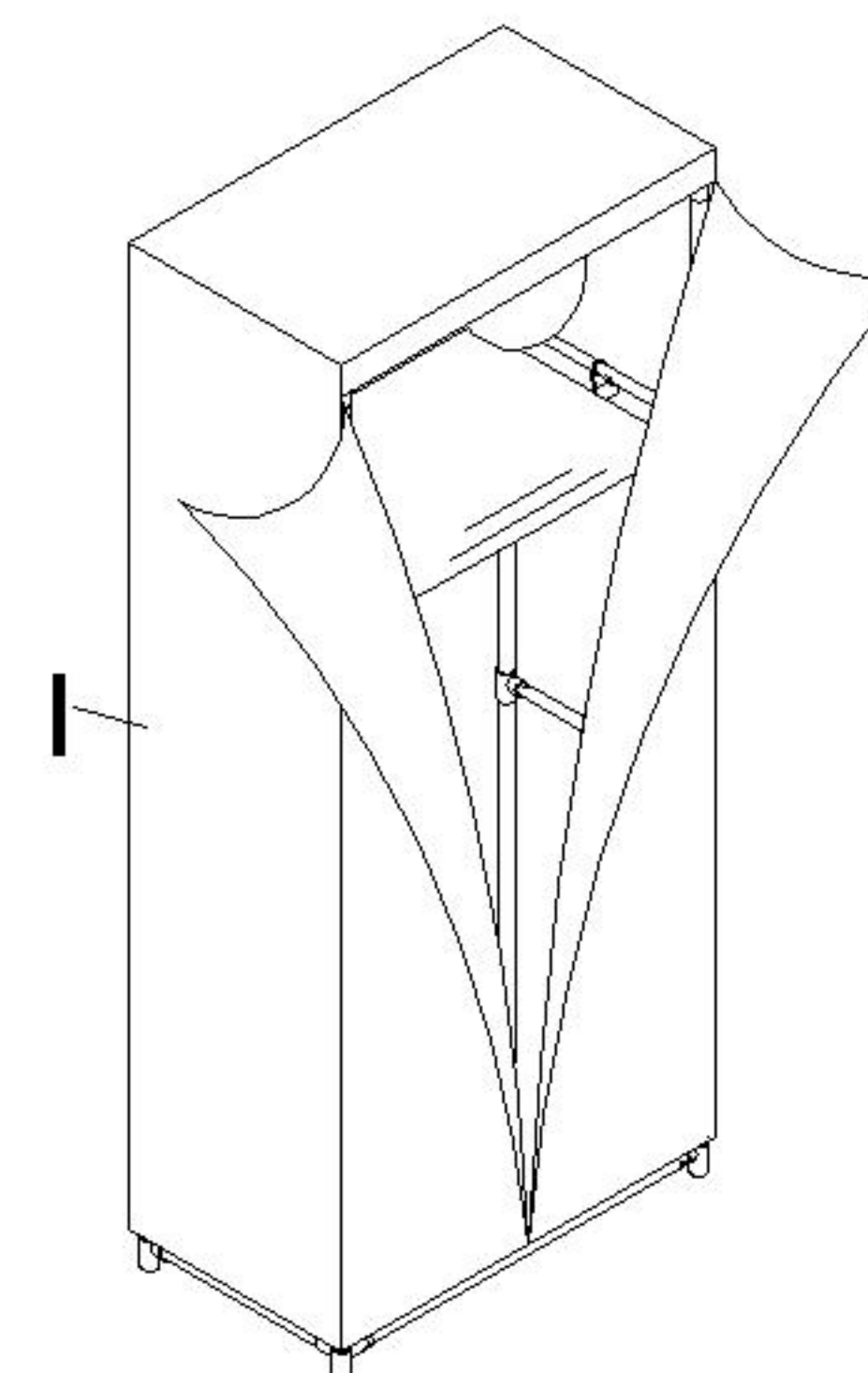
Attach shelf from step1, then assemble plastic part (G) to metal tube (D).

Step 5



Insert tubes (C) into parts (G).
Attach the top frame from step1, then assemble plastic part (G) to metal tube (C).

Step 6



Finally, put fabric cover (I) to the top frame.